

The home of hot springs and
Japan's no.1 suspension bridge



A Walkway through the Skies

Spanning majestically across the skies above Kyusui Ravine is the Kokonoe "Yume" Otsurihashi.

A gently-swaying vantage point offering magnificent views, the likes of which you will have seen before only in the world of dreams.

This is a walkway through the skies, stretching across a pristine natural environment which changes with the seasons.

They say this bridge is 777 meters above sea level

390 meters long, 173 meters high. Number one in Japan in both dimensions.

Let's go into a hot spring

Let's also eat Kokonoe "Yume" Burger

Japan's number-one suspension bridge/
Kokonoe "Yume" Otsurihashi.

No kidding?

This is really high ...



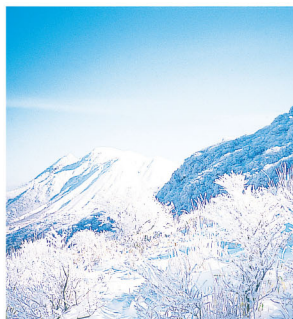
Hot Springs and Natural Highlands All here in KOKONOE

Once you've had your fill of the spectacular views of Naruko-gawa Gorge, it's time to enjoy some of Kokonoe's many other attractions!

Check out the rich variety of spas and natural locations, the changing seasonal landscapes and events, and the delicious food!



Hanabi of the Housenji



Makinoto Fog Deposit



Miyamakirishima



Kokonoe Handa Plateau
Cross-country course



Tadewara shitsugen



Ryumon no taki



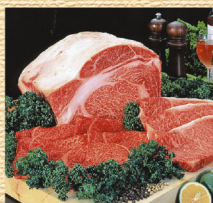
Winter Sports

Seasonal Events Guide

Jan	Second Saturday	Hanabi of the Housenji
Feb	Latter part of the month	All-Kyushu Snowballing Tournament
Mar	Around the middle of the month	Handa Plateau Burn-off
Apr	Second Sunday	NASHIKAI Festival
May	8th	Ukenokuchi Spa Festival
	Mid May	Suijyu Spa Fireworks
Jun	First Sunday	Kuju Mountain Climbing Season Opening
	Early in the month to early July	Housenji Firefly Festival
July	First Sunday of July	Takara Hachiman Hydrangea Festival
	Third Saturday	Shimodan Gion
	Third Saturday/Sunday	Nogami Gion
	Third Sunday	Ryumon Waterfall Opening Summer Festival
Aug	First Saturday	Kokonoe Handa Plateau Night Hike
Sep	From the beginning to the end of the month	Suijyu Spa Moon-Viewing Festival
		Yutsubo Spa Moon-Viewing Festival
Oct	Third Saturday and Sunday of October	Kokonoe Furusato Festival
	Mid October	Hosenji Spa Moon Viewing Festival
Nov	25th	Suijyu Amazake Festival
Dec	The beginning of the month	Opening of the Kokonoe Ski Area

* Event dates and other details are subject to change.

Guide to Tasty Delights and Souvenirs



Bungo Beef



Kokonoe "Yume" Burger

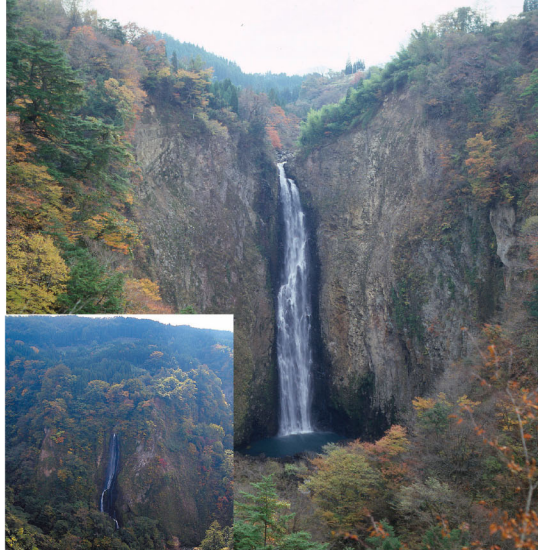


Locally-brewed sake (rice wine) Kokonoe "Yume" Pork Don

Bungo beef, shiitake mushroom, a tomato, a pear, a white welsh onion, etc. which grew up in the cool altitudes are typical specialties. The locally-brewed sake prepared carefully in the quiet basin where clean water flows in is high recommendation as the souvenir of the trip. Moreover, excellent pieces you can taste only in Kokonoe, such as the Kokonoe "Yume" Pork Don with much sweet pork cherished in the nature of the Kokonoe, the Kokonoe "Yume" Burger with local foods in plenty, or the ground, --pleasing.

Kokonoe “Yume” Otsurihashi

The Kokonoe “Yume” Otsurihashi built over the ravine which altitude is 777 meters are 390 meters in length, and 173 meters in height, and are the No.1 scale in Japan as a suspension bridge only for humanity. From the Otsurihashi, you can look at the Shindo Falls which consists of O-daki (“male waterfall”) which is chosen as one of “100 remarkable waterfalls in Japan”, and we’re also proud of the leading size, and Me-daki (“female waterfall”).



▲ O-daki
(one of Japan's top 100 waterfalls)
Drop of 83 meters

◀ Me-daki

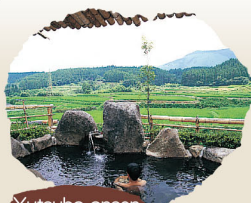
Kokonoe “Yume” Onsenkyo

(Hot springs)



Kabeyu onsen

Carved out of the rock face, the natural hot spring cave bath is full of rustic charm.



Yutsubo onsen

There are many minshuku (Japanese guest-houses) dotted around this quiet mountain hamlet, which is commonly known as Yutsubo Minshuku Village.



Ukenokuchi onsen

A center for hot spring therapy, often remembered in connection with the distinguished literary figure Yasunari Kawabata. Exudes the kind of tranquil atmosphere you can only find in a secluded mountain setting.



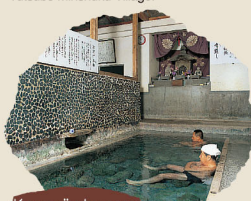
Hosenji onsen

The hot springs here are said to have been brought forth by Shonin Kuya, a monk who lived more than 1,000 years ago. Renowned as a home for fireflies.



Sujiyu onsen

Boasts a long history as a center for hot spring therapy. Particularly famous for its hot spring water showers and the local specialty cuisine Gokuraku Onkei chicken.



Kan no jigoku onsen

Located some 1,100 meters above sea level, this spa is rare in that its water is cold - just 14 degrees Celsius.



Kawazoko onsen

Hot spring water flows out from the riverbed. The base of river stones imparts a pleasant feeling.



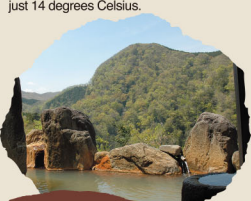
Ryumon onsen

Features the Ryumon Waterfall, known for its waterfall side. Several ancient temples, shrines and historical sites are dotted around the area.



Cyojyabaru onsen

Hot springs well forth all over the Chojabaru plain, the gateway to the Kuju Ranges



Kyusukei onsen

A spa located in the Kyusu-kei Ravine, known for its superb autumn foliage. Enjoy the seasonal landscapes while bathing.



Magoso onsen

Located in the Handa Plateau, this spa features cloudy yellow spring water. The views across the Kuju Ranges from the outdoor bath are superb

Kokonoe "Yume" Otsurihashi

Opening hours

January-June / November-December: 8:30 a.m. to 5:00 p.m.
July-October: 8:30 a.m. to 6:00 p.m.

※Last entry to the bridge is 30 minutes before closing time.
Closed on: None (may be closed in certain weather conditions)



Bungonakamura
the station with the kayabuki roof which touches your heart as a traveler



Kokonoe "Yume" Burger character [YumeKun]

KOKONOE "YUME" BURGER OFFICIAL SHOP	TEL (0973)
REST HOUSE YAMANAMI	79-2345
TENKUKAN	73-3556
MACHIDA BURNET FARM	78-9446
KOKONOE SHOPPING PARK AMI TACHIBANA	73-5515
TEPPEI SHOKUDO	78-8647
ASAHDAI LODGE	79-3131
KOKONOE NO KOKO NO PANYA	76-3628
HANDAKOUGEN DRIVE-IN	79-3123

● An information board will display updates on congestion on the bridge, etc.

Kokonoe Yume Otsurihashi Tourist Information Center: Telephone 0973-73-3800
Kokonoe Furusato-kan Tourist Information Desk: Telephone 0973-73-5510
Kuju Handa Plateau Tourist Information Center: Telephone 0973-79-2381

Industry and Tourism Division, kokonoe Town Hall: Telephone 0973-76-3150
<http://www.town.kokonoe.oita.jp/>

Kokonoe Town Tourism Association: Telephone 0973-76-3866
<http://www.kokonoe-k.com/>

